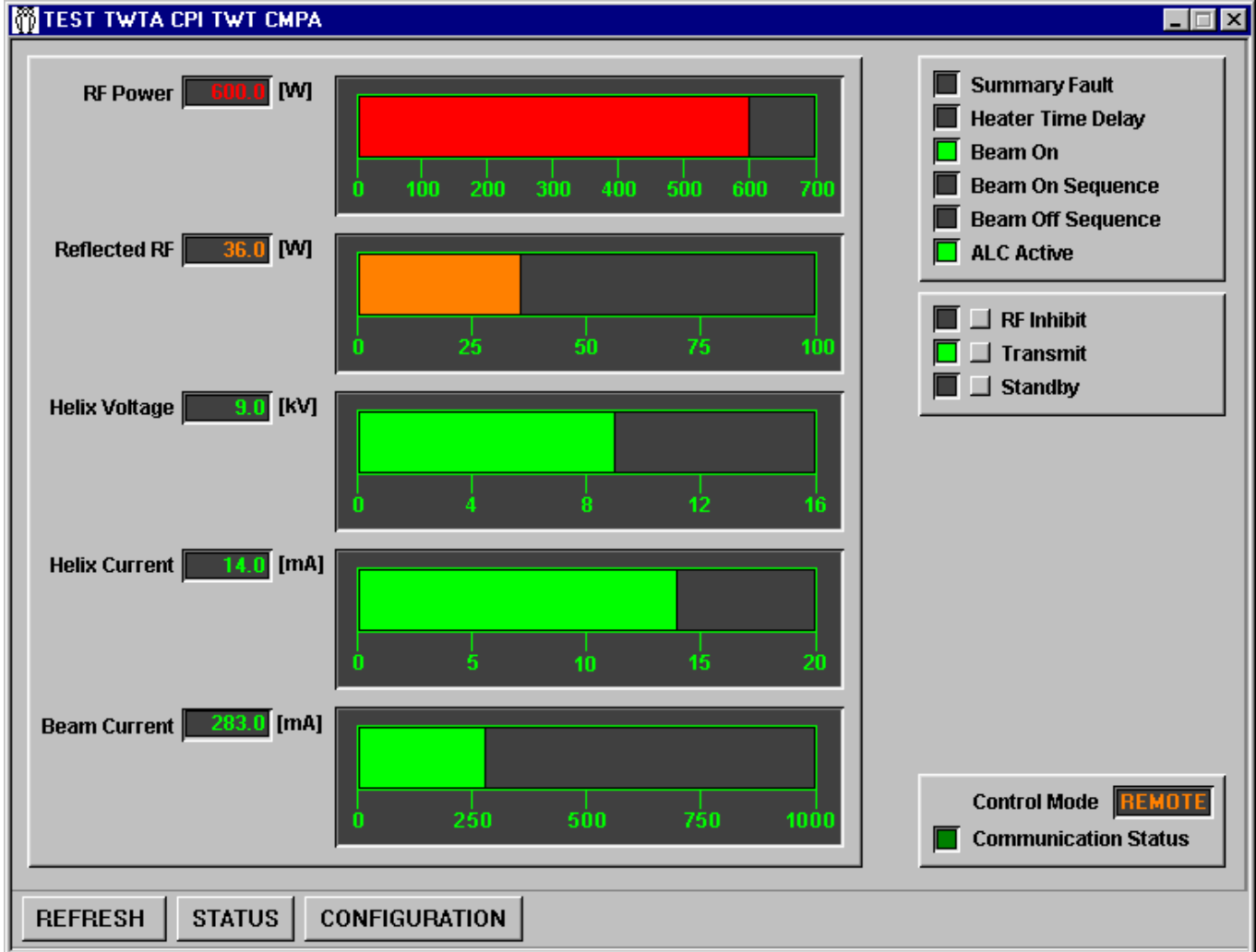




Micus Real Time Software Inc.
5863 Leslie St. Suite 127
Toronto, Ontario
M2H 1J8
Canada
Tel: (416) 493 3623
Fax: (416) 502 9083
www.micus.ca

MICUS ALARM AND CONTROL SYSTEM (MACS) CPI TWTA MONITOR



CPI TWT amplifier (TWTA) is used in satellite communications earth stations, satellite news-gathering vehicles and fly-away applications operating in the C and Ku frequency bands. *Micus Alarm and Control System (MACS)* provides automated alarm monitoring and remote control access to any number of TWTA's from one or more computer workstations on your computer network.

MACS CPI TWTA equipment module supports all remote control and monitoring features offered by the TWTA's. These features include:

- Remote access via computer network
- Programmable status polling intervals
- Monitoring TWTA operating parameters
- Monitoring TWTA alarm status
- RF inhibit, transmit and standby push buttons
- TWTA fault and status screen
- TWTA configuration and control screen
- Refresh button
- SSPA communication alarm
- Simple Network Management Protocol (SNMP) access to TWTA units

MACS TWTA equipment module is immediately available from Micus Real Time Software Inc.

